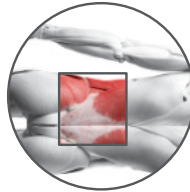
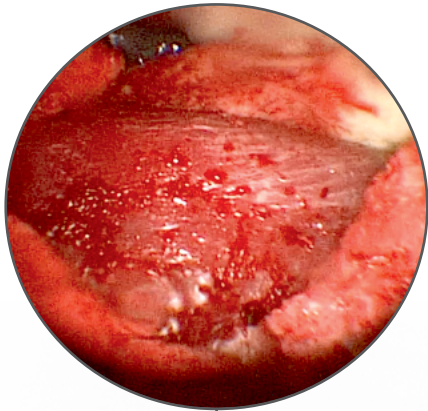


RealSpine

LATERAL L2/S1

Lifelike anatomy for **lateral access** training in spine surgery
ATP and Transpoas Approach



Lifelike visual and haptical feedback from all anatomical structures



Most accurate muscle in the market including different layers and fascia



Same operable levels as in specimens (L2-S1)

RealSpine | LATERAL L2/L5

Cost-efficient **modular system**,
designed to replace only the
modules used during training

Module 3

- Vertebrae L2-L5
- M. Psoas major
- Retroperitoneal fat
- Disc operable (3)

Module 2

- Skin posterior
- Muscle posterior

Module 1

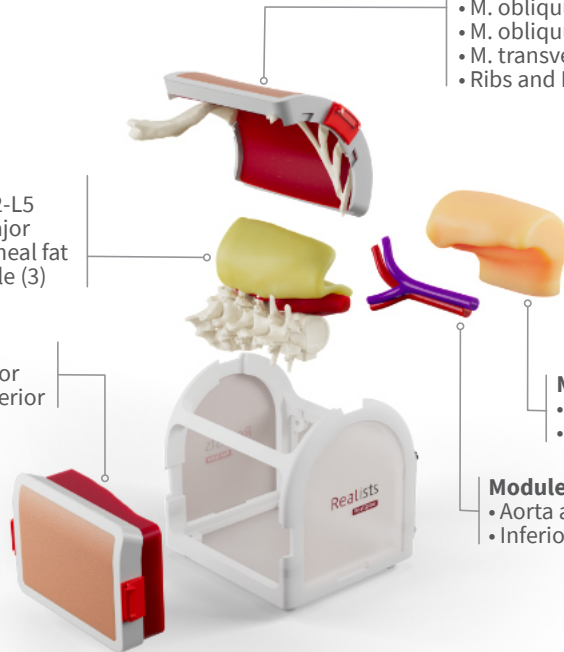
- Skin lateral
- Subcutaneous fat
- M. obliquus externus
- M. obliquus internus
- M. transversus
- Ribs and Iliac Crest

Module 4

- Peritoneum
- Ureter

Module 5

- Aorta abdominalis
- Inferior vena cava



Our masterpiece for spinal surgery simulation

- 3 operable levels
- Insertion of up to 3 cages
- Placement of up to 8 pedicle screws
- Optional bleeding
- Single position surgery (lateral and posterior approach)



Compatible with
Reallmaging (fluoroscopy
simulation) and X-Ray

Realists

Realists Training Technologies GmbH
www.realists.de/lateral
contact@realists.de

